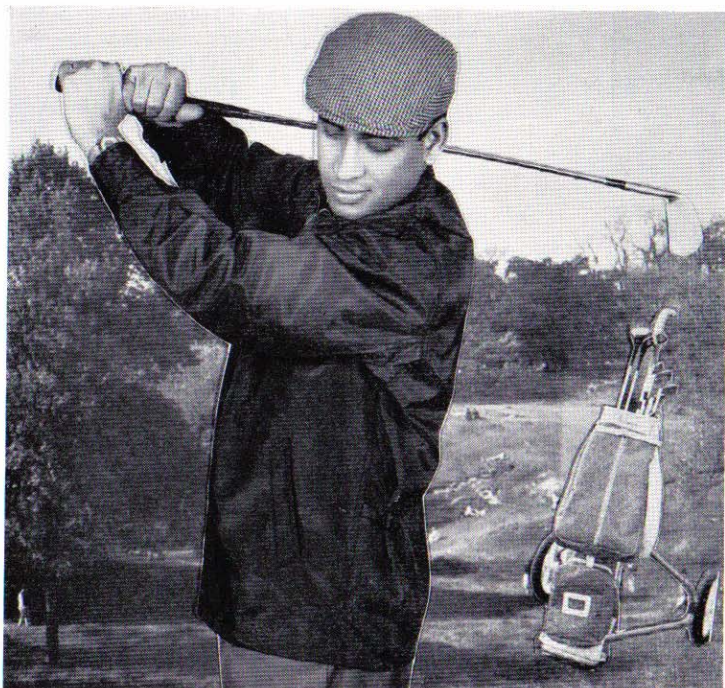


# GOLF JACKET with pivot sleeve

Measurements: 40" chest - 18" natural waist - 26½" full length - 8" half across back - Scale ¼ of chest plus 6" = 19½. ⅜" seams are allowed at all parts of the draft.



THE emphasis is on the pivot section of the sleeve which allows for easy arm movement; the fit is generally comfortable. Materials used vary from cotton to man-made fibre fabrics or a mixture of both. A whole-back is featured.

### Diagram 12

1 from 0 = ½ scale; 2 from 0 = ¼ scale; 3 from 0 = ⅛ scale.

4 from 0 = natural waist length.

5 from 0 = full length 26½".

Draw construction lines by squaring from these points.

6 from 0 = ⅛ scale; 7 from 6 = 1⅜".

8 from 1 = half across back plus 1¼"; square from 8 to locate points 9 and 10.

11 from 10 = ¾"; 12 from 11 = ¼"; join 12-7 and shape back neck 7-0.

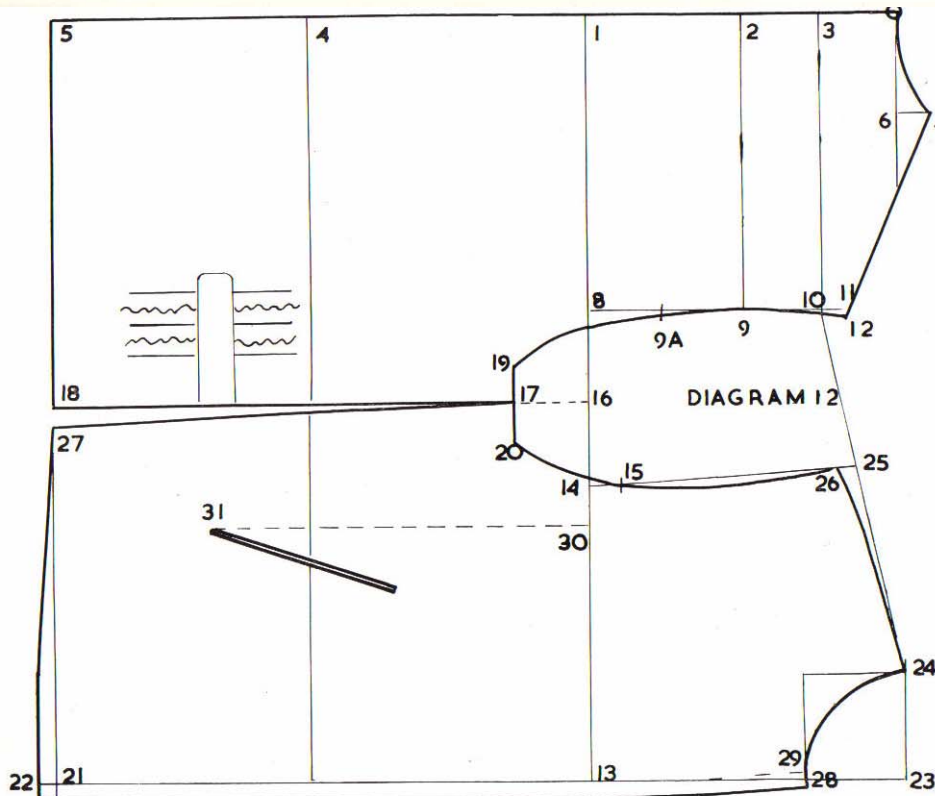
13 from 1 = half chest plus 4"; square both ways to mark the centre-front line.

14 from 13 = ½ scale less ½".

15 from 14 = ⅓ scale less ½".

16 is midway 8-14; square on chest line

47



at point 16 to mark 17 = 2¼" and 18 at bottom line.

19 and 20 each squared from 17 = 1⅜" (19 to 20 = 2¼").

Locate 21 on centre-front line and 22 from 21 = ½".

23 from 13 = ½ scale plus ¼".

24 squared from 23 = ⅛ scale plus ¼"; join 24 to 10.

25 from 24 = 7-12; join 25 to 15.

26 from 25 = ⅝".

Draw the armhole as illustrated.

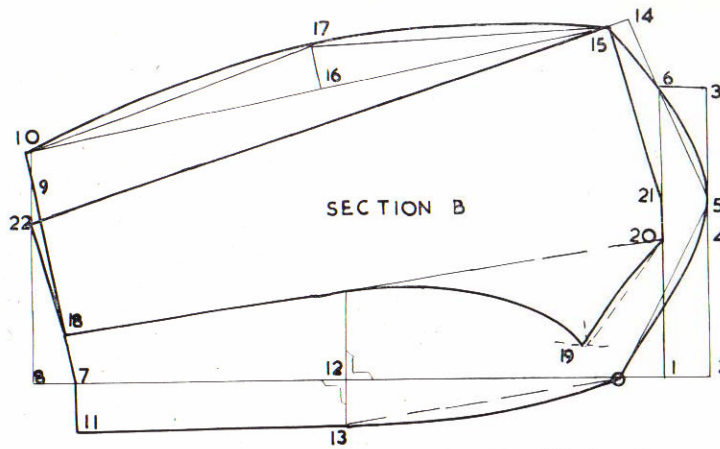
9A is midway 9-8 as dropped back pitch from basic 9.

27 from 18 = ½"; join 17-27 and 22-27; an adjustable soft pleat is illustrated.

28 from 23 = ⅛ scale; 29 from 28 = ¼"; shape front and neck circle; allow ½" for zip front forward of centre-front line 29-13-22.

Pocket guide point 30 from 14 = 1¼".

31 square from 30 = 3" lower from waist line. The pocket can be marked on



different angles from point 31. The one illustrated is directed towards point 23.

**Sleeve - Section B**

On construction line mark point 0.

1 from 0 =  $\frac{1}{2}$ " scale; 2 from 0 =  $\frac{1}{8}$ " scale; square 3 from 2 = 9 to 12 plus 26 to 15 (armhole).

4 is midway 3 - 2; 5 from 4 = 1".

6 is located on lines squared from 1 and 3.

7 across from 6 = sleeve length less cuff.

8 from 7 =  $1\frac{1}{2}$ "; square 9 from 8 =  $\frac{1}{2}$ " scale plus  $\frac{1}{4}$ "; join 7 to 9 and continue to 10 =  $1\frac{1}{4}$ ".

11 squared from 7 =  $1\frac{3}{4}$ ".

12 is midway 7 - 0.

13 from 12 =  $1\frac{1}{2}$ "; shape forearm seam 0-13-11; join 5 to 6 and continue to 14.

14 from 6 = 9 to 9A (Diagram 12).

15 from 14 =  $\frac{1}{2}$ "; shape the crown as illustrated; join 15 to 10.

16 is midway 15 to 10; 17 from 16 =  $1\frac{1}{2}$ "; complete hindarm seam 15-17-10.

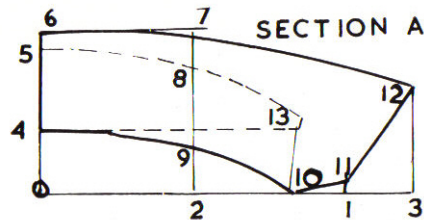
**Collar - Section A**

On the construction line 1 from 0 = 0 to 7 plus 24 to 29 (Diagram 12, neck circle).

2 is midway 1 - 0; 3 from 1 = 2"; square from these points.

4 from 0 =  $1\frac{3}{4}$ "; 5 from 4 =  $2\frac{1}{4}$ "; 6 from 4 =  $2\frac{3}{4}$ "; square from 6 to meet at point 7.

8 from 7 = 1"; 9 from 2 =  $1\frac{1}{4}$ "; 10 from 1 =  $1\frac{1}{2}$ "; 11 from 1 =  $\frac{1}{4}$ "; 12 from 3 = 3".



Square a line from point 4 to locate point 13 on this line by swinging an arc out from 10 using point 4 as pivot. Complete the collar and the stand, as shown in dash line.

**Undersleeve**

18 from 7 =  $1\frac{3}{4}$ ".

Using 18 as pivot, swing an arc with distance of forearm length 0 to 11 less  $\frac{3}{4}$ ".

Crosses this arc with another swung from 15 with the undersleeve distance (9A-17-15) plus  $\frac{1}{4}$ ". Call this point 19.

Point 20 from 19 on the line 1 - 6 = 9A to 19 plus  $\frac{1}{2}$ " (Diagram 12).

Draw guide line 20 - 18 and shape forearm 19 - 18 as indicated.

Join 19 to 20 (giving a slight hollow).

21 from 20 =  $1\frac{1}{2}$ "; 22 from 9 =  $1\frac{1}{4}$ ".

Join 21 to 15 and hindarm 15 to 22.

**Cuff**

1 from 0 =  $9\frac{3}{4}$ ".

2 from 1 =  $1\frac{1}{4}$ ".

3 from 0 =  $2\frac{1}{2}$ ".

